



# THE GROVE SCHOOL NEWSLETTER

Wednesday 6<sup>th</sup> November

## SHOUT OUTS TO ....

From Dove Tree Class, Winnie for Love and being such a kind and caring class member and Kit W for Happiness being back at school with a big smile!

From Lime Tree Class, Elsie and Fox, both for Learning and great progress in reading.

From Lilac Tree Class, Maisie for Happiness and a fantastic attitude to learning and Emma for Individuality being herself with a big smile.

From Willow Tree Class, Theo and Asante, both for Individuality and incredible art work in their RE and great researchers in history.

From Mountain Ash Tree Class, Jacob for Learning with such great enthusiasm and Annabelle for Love and always, always being so kind.

From Juniper Tree Class, Amy for Communication and working so well with others and Bella for Learning with so much effort and positivity.

From Ginkgo Tree Class, Beatrice for Learning with so much effort and Immy for Individuality and her lovely bubbly nature.

From Trumpet Tree Class, Dorothy for Learning and doing so well at improving her accuracy in maths and Brandon for Learning and consistently high standards in his work.

From Flame Tree Class, Loveday for Learning so hard and being a superstar and Ella for Love in working so hard and being so lovely!



### **Racism – we need to be able to talk openly about racism in our society.**

Here is a useful video about what action to take when witnessing racism to share with your children  
<https://www.bbc.co.uk/newsround/av/53068444>

This one is parents talking to their children about their experiences of racism

<https://www.youtube.com/watch?v=naFYKDA1QGQ>

And this is some children talking about racism in the UK

<https://www.bbc.co.uk/newsround/av/53071098>

### **Cookbook check**

We have recipes from these children listed here. Please let us know if your child is NOT on this list and did send a recipe! I'm worried the odd one may have got lost on the way and I don't want them to miss out.

Fraser, Millie, Lewis J-L, Primrose, Noah W, Amelia, April, Fred C, Bea S, Eleanor, Hattie, Torr, Lyddon, Martha, Rory, Eva, Cyra Emily L, Alfie B, Dot, Hugo, Ava D, Emily, Seth Gi, Maishe, Zebedee, Adeline, Tallulah, Arlo W, Kit W, Islay, Denis, Fergus, Sophie, Aphra, Aria O'C, Flora, Margot, Atticus G-J, Bea T, Imogen, Zoya, Sophia, Hazel, Eliza, Jemima, Elliot D, Malin, Emily S, Seth Gr, Isabel V, Hermione, Aria K-L, Sofia W, Laurie, Evie D, Theo S-N, Moby, Polly & Seth G-J, Cillian, Persie, William D, Oskar B, Iris F-W, Juno, Bea G

### **Cooking lessons**

Marco is now teaching all the children how to cook following our new cookery curriculum from Y0-Y6. We would really appreciate a £5 contribution to costs for this, you can find it on parent pay. Yesterday Lilac were making cakes and before half term, Flame made pasta and sauce and Dove made tartlets.

[http://www.the-grove-primary.devon.sch.uk/web/school\\_meals/138106](http://www.the-grove-primary.devon.sch.uk/web/school_meals/138106) here is the link to our very own cooking curriculum.

### **Lunch trial for Deli box offer for KS2**

Year 5 and 6 children discussed with us what they might like to see on the new menu and decided they would like to trial a Deli-box option. This would be only available to Years 3,4,5 and 6 on Thursdays as a trial and will be a range of different deli items that the children have chosen e.g. a home-made roll with a selection of fillings, hummus, crudities, pasta salad etc. You can order this on Parentpay but it won't be under meals (as adding the 3<sup>rd</sup> option proved tricky as a trial) so please look out for it on your Parentpay dashboard, when it's available, if your child would like this. Price £2:50.

### **Parent consultations are next week – 2pm until 5pm**

If you haven't already done so, bookings are open on eSchools for Parent consultations:

Monday 11<sup>th</sup> November will be all classes face to face in school hall

Tuesday 12<sup>th</sup> November will be face to face in school hall for Dove, Lime, Lilac and Mountain Ash  
Tuesday 12<sup>th</sup> November will be online (Teams) for Trumpet and Ginkgo

Wednesday 13<sup>th</sup> November will be face to face in the studio for Willow and Juniper  
Wednesday 13<sup>th</sup> November will be online (Teams) for Robins and Treecreepers

Thursday 14<sup>th</sup> November will be online (Teams) for Flame Tree class

Teams invitations will be sent out either the day before or in the morning of the day. The invite will be sent to only one parent in the group so please forward this to the other person taking part. There will be a Teams waiting room system.

### **Royal British Legion Poppy Appeal**

Poppies are now available at reception for a donation. There is also lots of other Poppy Appeal goodies for sale, (prices up to £1) to raise money for the Royal British Legion. If your child would like to buy an item please send them in with money for the collection box.

### **Years 3 and 4 Kents Cavern Trip**





## **WEBSITE UPDATE**

We are looking to revamp our website to make it more user friendly and appealing and to allow diversity and what makes our school special to shine through.

We are tied to a platform called eschools so there is not a huge amount of scope for a complete overhaul but if you have any expertise in this area and/or an eye for design, it would be great to hear from you. [helenf@the-grove-primary.devon.sch.uk](mailto:helenf@the-grove-primary.devon.sch.uk)

## **The Grove Community Knowledge Bank**

If you feel you have any expertise to offer our school (it could be anything from a talk about your area of work or special interest, a background of diversity which you are willing to share or any practical expertise), please click on the link below and fill in your details. The idea is that your details will be collated and given to staff who can call on help as and when needed.

Many thanks in advance.

<https://forms.gle/PXXq6ravXSKsmtY2A>

## UPCOMING PTA EVENTS



### Tomorrows Bake Sale 50p a cake

It is LIME TREE CLASS'S turn to organise the bake sale after school. Please can children from Lime Tree bring in delicious treats to sell. We do need help to man the stalls, maybe you could help when it's your child's class to bake? Any help would be amazing, please see Jenni or email [jennir@the-grove-primary.devon.sch.uk](mailto:jennir@the-grove-primary.devon.sch.uk)

Cakes will be sold on the field and at the front entrance after school.

Next week it will LILAC tree class on **Friday** 15<sup>th</sup> November.

21<sup>st</sup> November: Dove Class

28<sup>th</sup> November: Acorns

### Christmas Cards

You have a couple more weeks to design your amazing Christmas cards. Please bring in to school by Monday 25<sup>th</sup> November.

### Movie Night – Friday 15<sup>th</sup> November 5:30pm – 8pm

Permission slips have been sent out – please can they be returned to school with the money (we will have the card machine if that's easier when you return your slip) by Thursday 14<sup>th</sup> November.

.Please choose one movie your child would like to watch.

### Christmas Jumpers

If you have any Christmas jumpers to donate, toddlers, childrens, adults for the Christmas fair, please could you drop them off at the front desk. Thank you.

### Christmas Fair

If you are having a clear out over half term, we would be grateful for:

- ▶ Good quality children's toys, books, games etc (Sorry no bric-a-brac – only children's item please)
- ▶ Tombola – unwanted gifts, bottles, chocolates, stationery etc...
- ▶ Teddies – any pre-loved teddies needing a new home
- ▶ Lucky Dip – any small items that can be used for the lucky dip – see picture below to give you some ideas



### **Christmas Raffle**

If you have a business or know anyone who would kindly donate a raffle prize, we would be very grateful. Please see either Jenni or Natasha or drop items to the front desk. Thank you.

### **Christmas Quiz – Friday 13<sup>th</sup> December**

After the success of the last quiz, we will be doing a Christmas quiz on Friday 13<sup>th</sup> December in the school hall. Lots of festive fun, bar and raffle.

Book in your teams now (max 6 in a team) £5 per person. Email [helenf@the-grove-primary.devon.sch.uk](mailto:helenf@the-grove-primary.devon.sch.uk)

### **OTHER EVENTS THIS TERM:**

MUFTI DAY (bring sweets contributions for the Christmas Fair): **This Friday 8<sup>th</sup> November**

MOVIE NIGHT: 15<sup>th</sup> November

MUFTI (bring cakes for the Christmas Fair): 6<sup>th</sup> December

CHRISTMAS FAIR: FRIDAY 6<sup>th</sup> December: 5 - 8 pm

CHRISTMAS QUIZ: 13<sup>th</sup> December 7pm for a 7:30pm start

### **The Grove School PTA Facebook Page**

The Grove School PTA Facebook Page will also keep you up to date on events and fundraisers – eg, bake sales, fairs, discos etc.

### **Dates for your diary this term** <http://www.the-grove-primary.devon.sch.uk/web/calendar/256154>

Year 5 and 6 Non Swimmers – Mondays until Christmas

Mufti Day – This Friday 8<sup>th</sup> November

Parent – teacher consultations - week beginning 11<sup>th</sup> November

Christmas Fair – Friday 6<sup>th</sup> December

Christmas productions - week beginning 9<sup>th</sup> December

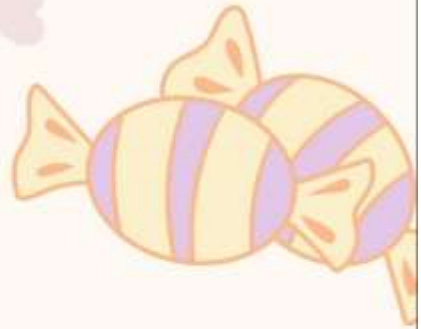
Years 3 and 4 Rehearsal all day KEVICC – Tuesday 10<sup>th</sup> December

Years 3 and 4 Christmas Show KEVICC – Wednesday 11<sup>th</sup> December

Kind regards,

Hilary Priest

*Adverts – please note that the school is neither recommending nor supporting the adverts below. If you wish to advertise in our newsletter then please contact the school for details.*



# Mufti Day

Friday 8th of November.



Children can wear their own clothes this Friday.



Please donate sweets (not chocolate) for the Christmas Fair.



Thank you!





**The Grove School**

**15TH NOV | 5.30 - 8 PM**

# **MOVIE NIGHT**

**[ STAR WARS,  
INSIDE OUT 2 OR  
PAW PATROL THE MOVIE ]**

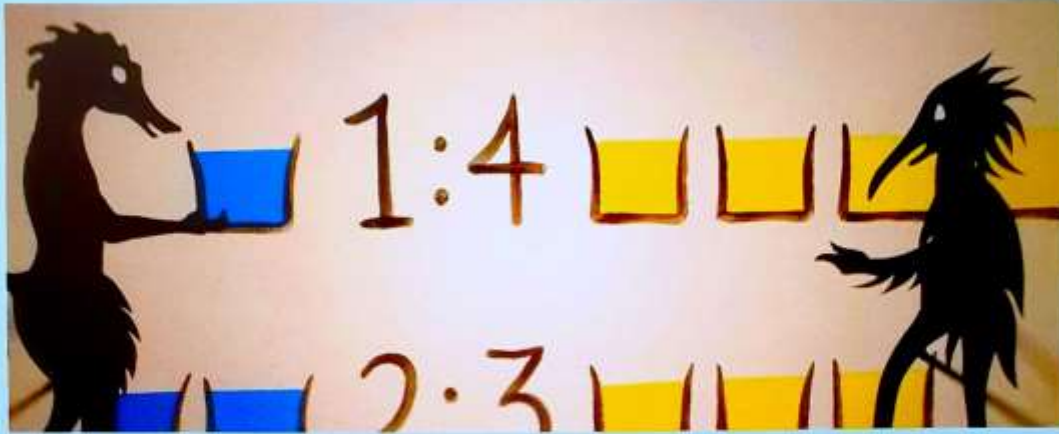
**£5 per Child**

**Includes:  
Unlimited Juice, Biscuits & a Bag of  
Popcorn.**

**WEAR YOUR PYJAMA'S,  
BRING A CUDDLY TOY,  
A BLANKET & ENJOY THE MOVIE.**



# Maths & 11+



## Primary to GCSE Tutoring in South Brent

Qualified maths teacher with an arts background, delivering creative, fun, cognitive, fresh approaches.

Empathic style, with experience of special educational needs, including dyslexia.

1:1 lessons, tailor made for the learner.

**Kate Stubbs 07977 777 869**

[kate.stubbs@devontutors.com](mailto:kate.stubbs@devontutors.com)

[www.devontutors.com](http://www.devontutors.com)

# SASI YOGA

Beginner  
Friendly



*SAFE, SOULFUL AND SLOW YOGA*

9:15am (1 hour) St George's Church, Goodrington  
(07359080920 | [www.sasiyoga.co.uk](http://www.sasiyoga.co.uk))

£8

## CLASS SCHEDULE

Monday morning yoga flow  
St George's Church Hall, Goodrington.  
9:15am (1 hour)  
(Book Via [www.sasiyoga.co.uk](http://www.sasiyoga.co.uk))

Tuesday Beginners Yoga  
Gro Wellness, Torquay.  
7:00pm (1 hour)  
(Book via [www.growellness.co.uk/book-studio-classes](http://www.growellness.co.uk/book-studio-classes))

Thursday evening yoga flow  
South Devon College.  
5:15pm (1 hour)  
(Book via [www.sdcsport.co.uk/classes](http://www.sdcsport.co.uk/classes))

Friday Rest & Restore  
All Saint's church Hall, Babbacombe.  
6:30pm (1 hour)  
(Book Via [www.sasiyoga.co.uk](http://www.sasiyoga.co.uk))