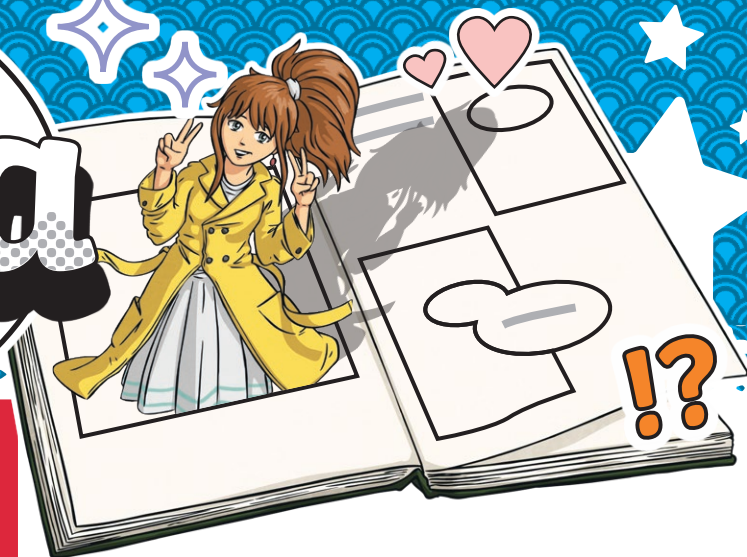


# Japanese Manga



## What Is Manga?



Manga is a group term for a variety of **graphic novels** and comics originally published in Japan.

Unlike other colourful comic book styles from the USA and Europe, Japanese manga is almost always published in black and white. Full-colour prints are traditionally only used for special releases or digital content. Similar to other Japanese texts, manga is read from right to left.



It is important to note that manga is different from anime. The term manga generally refers to printed narratives, e.g. books, comics and graphic novels, while anime is films and television series. Manga is created by talented artists called mangaka.

Some mangaka attend special manga schools and others work as apprentices for an established mangaka. Naoko Takeuchi is a popular and successful mangaka. She famously began her career by winning a manga writing competition run by a well-known manga publishing magazine.

## History of Manga

The term manga was first used in 1798 to describe a picture book by Santō Kyōden called 'Shijino Yukikai', which means four seasons. Some years later, the term manga was used by the famous artist Hokusai, who was best known for The Great Wave off Kanagawa. He used the term manga for his sketchbooks in 1814.

The collection of illustrations called 'Hokusai Manga' included scenes of daily life as well as sketches inspired by Japanese **mythology**.

Following the conclusion of the Second World War, Japan was occupied by the United States. With them, the Americans brought their own comics and this influence had a huge impact on the development of manga.

The future mangaka added their own American-inspired flair to the traditional Japanese illustrations and modern-day manga was born. Modern manga forms one important arm of the **otaku** culture and is a significant part of Japan's publishing industry with popular titles reaching millions of readers of all ages across the globe.



## Types of Manga

There is a huge range of different types of manga; genres are designed for a variety of audiences. Broadly speaking, manga is categorised according to the age and gender that it is aimed at.



Shonen is targeted at boys and is usually about an adventure, shojo is written for girls and is often centred around friendships and kodomo is designed for toddlers and very young children.



Although the traditional varieties have these gender ideas connected to them, anyone can equally enjoy both shonen and shojo.

Some of the most popular manga continue for many years. 'The Glass Mask' by Suzue Miuchi was one of the longest-running shojo manga and was published for 44 years from January 1976 until 2020. 'KochiKame', by Osamu Akimoto, is an astonishingly popular concluded shonen manga series with over 1960 chapters.

## Glossary

**graphic novels:** A book written in comic strip format.

**otaku:** Translates from Japanese as nerd but refers to a young person who is interested in computers or technology.

**mythology:** A set of stories or beliefs belonging to a particular culture.

## Getting into Manga

Manga is a fantastic way to expand the variety of your reading material. If you are keen to learn more about manga or perhaps even to start reading some manga for yourself, your local library would be a perfect place to start.

Usually, they will have a manga area and a librarian can help you pick a good title to start with. Most book shops also have a comic section that will have a selection of manga. With so many titles to choose from, you should always ask an adult to help you choose a suitable series.

# Questions

1. Where is manga from? Tick one.

- ☐ Europe
- ☐ anime
- ☐ Japan
- ☐ USA

2. Draw **four** lines and match each word to its definition.

mangaka

shojo

shonen

kodomo

manga about friendships

someone who creates manga

manga for toddlers

manga about adventures

3. Look at the section called **History of Manga**.

Find and copy one word which means 'folk tales'.

---

4. Fill in the missing words.

There is a huge \_\_\_\_\_ of different types of manga; genres are designed for a variety of \_\_\_\_\_.

5. Who began their mangaka career by winning a competition?

---

6. How do you predict that manga will change in the future?

---

---

---

7. Summarise the **three** types of manga mentioned in the text.

- \_\_\_\_\_
- \_\_\_\_\_
- \_\_\_\_\_

8. Explain **two** ways in which someone can train to become a mangaka.

---



---



---

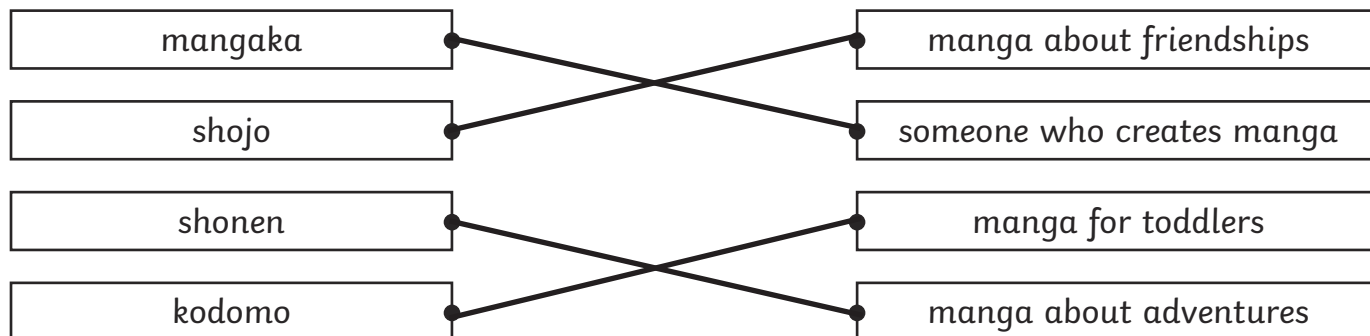


# Answers

1. Where is manga from? Tick one.

- ☐ Europe  
☐ anime  
☒ **Japan**  
☐ USA

2. Draw **four** lines and match each word to its definition.



3. Look at the section called **History of Manga**.

Find and copy one word which means 'folk tales'.

**mythology**

4. Fill in the missing words.

There is a huge **range** of different types of manga; genres are designed for a variety of **audiences**.

5. Who began their mangaka career by winning a competition?

**Naoko Takeuchi began their career by winning a manga writing competition.**

6. How do you predict that manga will change in the future?

**Pupils' own responses, such as: I predict that manga will change in the future by continuing to reflect how the world itself is evolving and changing. I also think that the genres may change and blend so they are not categorised for girls and boys separately.**

7. Summarise the **three** types of manga mentioned in the text.

**Pupils' own responses, such as: Shojo manga is about friendships and was traditionally written for girls, Shonen manga is traditionally more targeted at young boys and is usually about adventures and finally kodomo manga is for the youngest manga readers.**

8. Explain **two** ways in which someone can train to become a mangaka.

**Pupils' own responses, such as: Someone can train to become a mangaka by attending a special manga art school or by working as an apprentice for an established mangaka.**



## What Is Manga?

Manga is an umbrella term for a variety of comics and graphic novels originally produced and published in Japan. Unlike other colourful comic book styles from the USA and Europe, Japanese manga is almost always published in black and white.



Full-colour prints are traditionally only used for special releases or digital content. Similar to other Japanese texts, manga is read from right to left.

It is important to note that manga is different from anime; the two terms are not interchangeable. As a rule, manga refers to printed narratives, e.g. books, comics and graphic novels, whereas anime is films and television series. However, manga and anime are closely related with many popular manga series being made into anime.



## History of Manga



Manga is an ancient art form with a history deeply rooted in traditional Japanese art.

The term manga was first used in 1798 to describe a picture book called 'Shiji no Yukikai' (four seasons) by Santō Kyōden. Some years later, the famous artist Hokusai (best known for The Great Wave off Kanagawa) used the term manga for his sketchbooks in 1814.

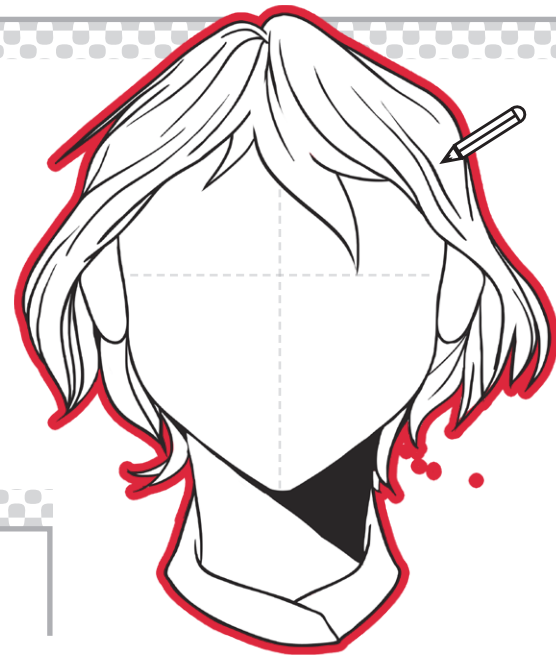
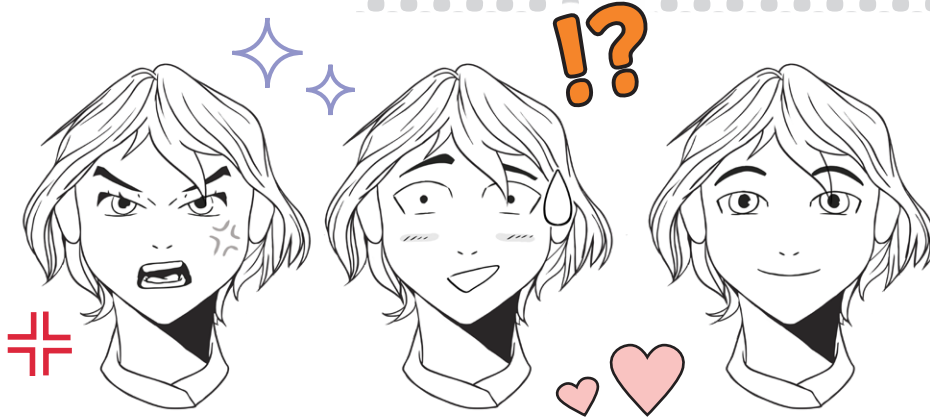
He felt that the term implied an idea of drawings caught on the spot. A collection of illustrations he called 'Hokusai Manga' included scenes of daily life as well as sketches of Japanese mythology and spirits.

Following the conclusion of the Second World War, Japan was occupied by the United States. With them, the Americans brought their own comics and this influence had a huge impact on the development of manga.



Manga series are created by talented artists; they are called mangaka. Some mangaka attend special manga schools and others work as apprentices for an established mangaka. Naoko Takeuchi, a popular and successful mangaka, famously began her career by entering - and winning - a manga writing competition run by a well-known manga publishing magazine.

The future mangaka were exposed to a world of comics that they had not experienced before; their inspirations diversified hugely. The mangaka added their own American-inspired flair to the traditional Japanese illustrations and modern-day manga was born. Modern manga forms one important arm of the **otaku** culture and is a significant part of Japan's publishing industry, with popular titles reaching millions of readers of all ages across the globe.



## Types of Manga

There is a huge range of different types of manga; genres are designed for a variety of audiences. Broadly speaking, manga is categorised according to who it is aimed at.



Shonen is targeted at boys and is usually about an adventure.



Shojo is written for girls and is often centred around friendships.



Kodomo is designed for toddlers and very young children.



Although the traditional types have these audiences, anyone can enjoy both shonen and shojo.



Some of the most popular manga continue for many years. 'The Glass Mask' by Suzue Miuchi was one of the longest-running shojo manga and was published for 44 years from January 1976 until 2020. 'KochiKame', by Osamu Akimoto, is an astonishingly popular concluded shonen manga series with over 1960 chapters. One of the most popular manga series with children around the world is 'Chi's Sweet Home'; the series follows a cute cat called Chi and ticks all the boxes for the current **kawaii** craze.

## Glossary

**kawaii:** Literally translates from Japanese to mean cute but also refers to the general culture and craze of the same name.

**otaku:** Translates from Japanese as nerd but refers to a young person who is interested in computers or technology.

**periodicals:** A magazine or newspaper published regularly.

## Step into the Manga-Verse

Manga is a fantastic way to expand the variety of your reading material. In Japan, manga titles are typically released chapter-by-chapter, weekly or monthly in magazines. Popular series are then sometimes collected together and published as paperback volumes called tankōbon, thus allowing fans to buy a compilation of chapters from their chosen series at once rather than purchasing **periodicals**.

If you are keen to learn more about manga or perhaps even to start reading some manga for yourself, there are some great places to start. Most bookshops have a comic section that will have a selection of manga.

The world of manga is vast and varied so wherever you decide to access your manga, always ensure you ask an adult to help you choose a suitable volume.



# Questions

1. Which of the following is **not** an example of manga? Tick one.

- ☐ comics
- ☐ films
- ☐ comic volumes
- ☐ graphic novels

2. Draw **four** lines and match each word to its definition.

mangaka	manga about friendships
shojo	someone who creates manga
shonen	manga for toddlers
kodomo	manga about adventures

3. Fill in the missing words.

Manga is a fantastic way to \_\_\_\_\_ the variety of your \_\_\_\_\_ material.

4. Look at the section called **Step into the Manga-Verse**.

Find and copy one word which means 'magazines'.

---

5. When was the term manga first used?

---

6. How did the Second World War influence the development of modern manga?

---



---



---



7. **Although the traditional types have these audiences, anyone can enjoy both shonen and shojo.**

What does this tell you about the world of manga?

---

---

---

8. How do you think modern manga compares to traditional Japanese art?

---

---

---

9. Summarise the section called **History of Manga** in 30 words or fewer.

---

---

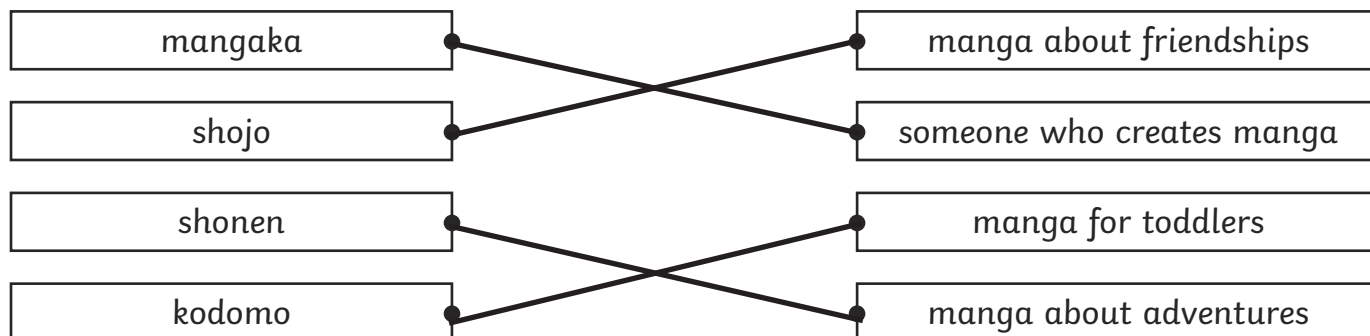
---

# Answers

1. Which of the following is **not** an example of manga? Tick one.

- ☐ comics
- ☒ **films**
- ☐ comic volumes
- ☐ graphic novels

2. Draw **four** lines and match each word to its definition.



3. Fill in the missing words.

Manga is a fantastic way to **expand** the variety of your **reading** material.

4. Look at the section called **Step into the Manga-Verse**.

Find and copy one word which means 'magazines'.

**periodicals**

5. When was the term manga first used?

**The term manga was thought to have been first used in 1798.**

6. How did the Second World War influence the development of modern manga?

**Pupils' own responses, such as: The Second World War influenced the development of modern manga significantly because after the war ended many Americans were present in Japan. The Americans brought their own comics and this influence had a huge impact on the development of manga.**

7. **Although the traditional types have these audiences, anyone can enjoy both shonen and shojo.**

What does this tell you about the world of manga?

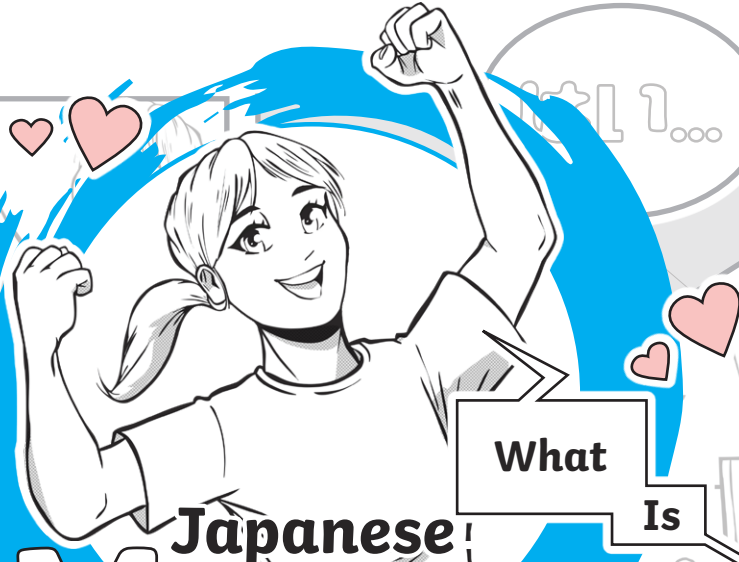
**Pupils' own responses, such as: This tells me that the world of manga is quite traditional and that it still holds onto the titles of the genres that suggest some series are for girls and some are for boys. However, as things change and stereotypes of what girls and boys are interested in are less prominent, anybody can enjoy shonen and shojo titles.**

8. How do you think modern manga compares to traditional Japanese art?

**Pupils' own responses, such as: I think that manga is highly influenced by traditional Japanese art and culture. I think that manga features some specific differences such as the distinctive large eyes and small mouths but retains some elements of Japanese style such as thick black outlines and use of black and white rather than colour.**

9. Summarise the section called **History of Manga** in 30 words or fewer.

**Pupils' own responses, such as: The term manga was first used in 1798. The artist Hokusai used it in the title of his sketches. After the war, mangaka included an American flair in their creations.**



What

Is

# Japanese Manga

Manga?

## Types of Manga

There is a huge range of distinct types of manga; different genres are designed for different audiences. Broadly speaking, manga is categorised according to the demographic that it is aimed at.

Shonen is targeted at young boys and is usually about an adventure, shojo is written for young girls and is often centred around friendships and kodomo is designed for toddlers and very young children. However, although the traditional types have these genre and gender ideas attached to them, anyone can equally enjoy both shonen and shojo.

Manga is an umbrella term for an eclectic variety of comics, comic book volumes and graphic novels originally produced and published in Japan. Unlike other popular comic book styles from the USA and Europe, usually printed in full colour, Japanese manga is almost always published in black and white. Full-colour prints are typically only used for special releases and digital content.

Within the manga-verse, there are huge variations in type, style, genre and content - manga enthusiasts would argue that there is something for everyone!

Similar to other Japanese written texts, manga is read from right to left.



One thing that is important to understand about manga is that it is different from anime; the two terms are not synonymous.

Some of the most popular manga continue for many years. 'The Glass Mask' by Suzue Miuchi was one of the longest-running shojo manga and was serialised in the Hana to Yume magazine for 44 years from January 1976 until 2020. It currently has a total of 49 volumes and is ongoing albeit now infrequently.



'KochiKame', by Osamu Akimoto, is an astonishingly popular concluded manga series with over 1960 chapters. One of the most popular manga series with children around the world is 'Chi's Sweet Home'; the series follows an adorable cat called Chi and ticks all the boxes for the current kawaii (Japanese for cute) craze.

As a general rule, manga refers to printed forms, e.g. books, comics and graphic novels, whereas anime is exclusively screen-based media, such as films and television series. However, manga and anime are closely related; the style and aesthetic are very similar and many popular manga series - such as 'Dragon Ball Z' and 'Sailor Moon' - become anime productions.

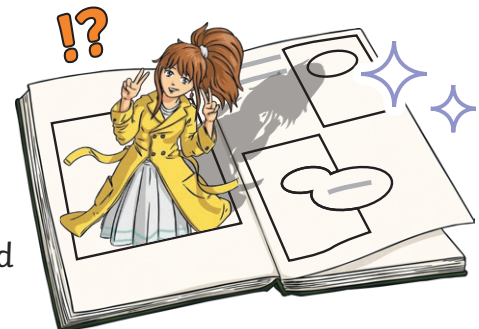
**Manga series are created by talented artists who are often both writers and illustrators. They are called mangaka.**

漫画家  
まん • が • か  
man • ga • ka

Some mangaka attend specialist manga schools, some study at art college and others work as apprentices for an established mangaka. Naoko Takeuchi, a popular and successful mangaka, famously began her career by entering - and winning - a manga writing competition run by a well-known manga publishing magazine.

## Manga Through the Ages

Manga is a centuries-old art form with a history deeply rooted in traditional Japanese art. Some historians would argue that it dates back as far as the first illustrated narrative scrolls of the 8<sup>th</sup> century. Others would contend that the first manga appeared in a series of drawings entitled 'Chōju-Giga' (Scrolls of Frolicking Animals) produced by several different artists in 12<sup>th</sup> century Japan.



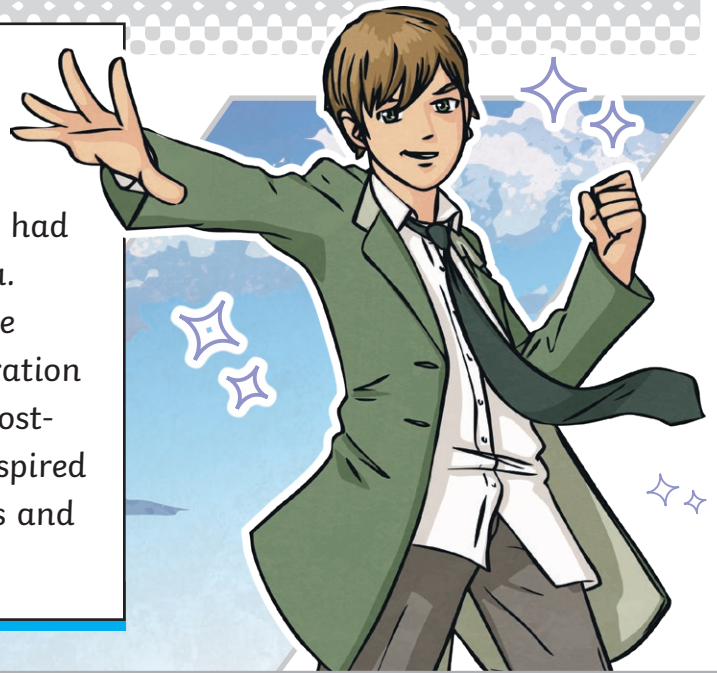




The term manga was first used in 1798 to describe a picture book called 'Shiji no Yukikai' (four seasons) by Santō Kyōden. Some years later, the famous artist Hokusai (best known for The Great Wave off Kanagawa) used the term manga for his sketchbooks in 1814. He suggested that the term implied a notion of impromptu drawings caught on the spot. A collection of illustrations he called 'Hokusai Manga' included scenes of daily life as well as representations of Japanese mythology and spirits.



Following the culmination of the Second World War, Japan was occupied by the United States. With them, the Americans brought their own comics and this influence had a huge impact on the development of manga. The future mangaka were exposed to a whole new world of material; their sphere of inspiration diversified significantly. This new breed of post-war mangaka added their own American-inspired flair to the traditional Japanese illustrations and modern-day manga was born.



Modern manga forms one important part of the otaku culture and is a significant part of Japan's publishing industry with popular titles reaching millions of readers of all ages across the globe. Otaku translates from Japanese as nerd but refers to a young person who is interested in computers or technology.

### Step into the Manga-Verse

Manga is a fantastic way to expand the variety of your reading material. In Japan, manga titles are typically released chapter-by-chapter, weekly or monthly in magazines. Popular series are then sometimes collected together and published as paperback volumes

called tankōbon, thus allowing fans to buy a compilation of chapters from their chosen series at once rather than purchasing periodicals.



If you are keen to learn more about manga or perhaps even to start reading some manga for yourself, there are some great places to start. Most bookshops have a comic section that will have a selection of manga. There are also other ways to read manga, including borrowing from local libraries or using digital apps. The world of manga is vast and varied so wherever you decide to access your manga, always ensure you ask an adult to help you choose an appropriate volume.

# Questions

1. Where is manga from? Tick one.

- ☐ Europe
- ☐ Japan
- ☐ USA
- ☐ China

2. Number the events from 1-4 to show the order that they happened in.

- ☐ The first manga appeared.
- ☐ Hokusai published 'Hokusai Manga'.
- ☐ The term manga was first used.
- ☐ Americans brought their comics to Japan.

3. Look at the paragraph called **What Is Manga?**

Find and copy one word which means 'the world of manga'.

---

4. Fill in the missing words.

One thing that is important to \_\_\_\_\_ about manga is that it is different from anime; the two terms are not \_\_\_\_\_ .

5. What are the people who create manga called?

---

6. Explain the relationship between manga and anime.

---

---

---

7. Summarise everything you have learnt about manga from this text.

---

---

---

8. How do you predict that the world of manga will change in the future?

---

---

---

9. **However, although the traditional types have these genre and gender ideas attached to them, anyone can equally enjoy both shonen and shojo.**

Look at this passage from the section **Types of Manga**.

What does it tell you about the world of manga?

---

---

---

10. How did the end of the Second World War affect the development of modern manga?

---

---

---

# Answers

1. Where is manga from? Tick one.

- ☐ Europe
- ☒ **Japan**
- ☐ USA
- ☐ China

2. Number the events from 1-4 to show the order that they happened in.

- 1** The first manga appeared.
- 3** Hokusai published 'Hokusai Manga'.
- 2** The term manga was first used.
- 4** Americans brought their comics to Japan.

3. Look at the paragraph called **What Is Manga?**

Find and copy one word which means 'the world of manga'.

**manga-verse**

4. Fill in the missing words.

One thing that is important to **understand** about manga is that it is different from anime; the two terms are not **synonymous**.

5. What are the people who create manga called?

**The people who create manga are called mangaka.**

6. Explain the relationship between manga and anime.

**Pupils' own responses, such as: Manga and anime are two different things but they are closely related. Manga is printed art, such as comics and graphic novels, whereas anime is screen-based series as films or television programmes. Often popular manga titles are made into anime series.**

7. Summarise everything you have learnt about manga from this text.

**Pupils' own responses, such as: Manga are Japanese comics. They are popular all over the world and stem back to traditional Japanese sketches from the 8<sup>th</sup> Century. There are lots of different types of manga written for different audiences.**

8. How do you predict that the world of manga will change in the future?

**Pupils' own responses, such as: I think that manga will continue to represent and be influenced by the changing world. Perhaps there will be more and more manga about climate change and maybe the genre titles will eventually change so that they are more inclusive and not referring to girls and boys.**

9. **However, although the traditional types have these genre and gender ideas attached to them, anyone can equally enjoy both shonen and shojo.**

Look at this passage from the section **Types of Manga**.

What does it tell you about the world of manga?

**Pupils' own responses, such as: This passage tells me that the world of manga is a very traditional one. They still use the original names of the genres which relate to girls and boys. However, manga of all genres is enjoyed by everyone nowadays.**

10. How did the end of the Second World War affect the development of modern manga?

**Pupils' own responses, such as: Following the end of the Second World War, there were a lot of Americans in Japan. Their American comics influenced the mangaka and future mangaka, who had never seen anything other than Japanese styles before. This led to a change in the style of the manga they were creating.**